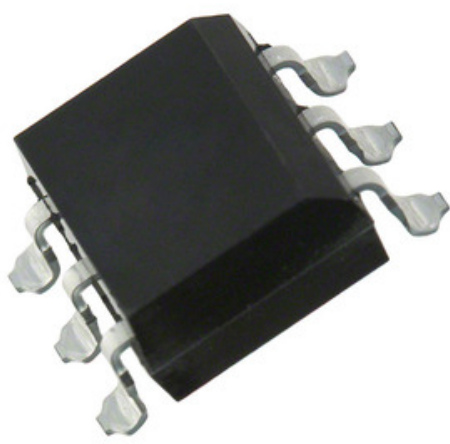


**TOSHIBA**  
Leading Innovation >>>



Ko te ahua he whakaahua.  
Tirohia nga whakaritenga mo nga taipitopito hua.

### TLP748J(TP1,F)

Tau Wae: **TLP748J(TP1,F)**  
Whakaahuatanga Hua: OPTOISOLATOR 4KV SCR 6SMD  
RoHs Tūnga: Whakahaerehia te kore utu / RoHS  
Ngā Rauemi: TLP748J(TP1,F).pdf

Kaihanga / Waitohu: Toshiba Semiconductor and Storage  
Tuhinga mai i: Hong Kong  
Te Ara Tuhi: DHL/Fedex/TNT/UPS/EMS

**TUKUNA HE UIUI** >

### Taipitopito hua

<b>Tau Wae</b>	TLP748J(TP1,F)	<b>Kaihanga</b>	Toshiba Semiconductor and Storage
<b>Whakaahuatanga</b>	OPTOISOLATOR 4KV SCR 6SMD	<b>Whakahaere Toko Whakahaere / RoHS Tūnga</b>	Whakahaerehia te kore utu / RoHS
<b>Pepa Raraunga</b>	TLP748J(TP1,F).pdf		
<b>Ko te Kotahitanga Crossroads</b>	No	<b>Momotuhi - Tae Atu</b>	600V
<b>Putanga - Whakamotu</b>	4000Vrms	<b>Puku - Whakamua (Vf) (Typ)</b>	1.15V
<b>Whakahurihia te Waa</b>	15µs	<b>Pūrere Pūrere Whakarato</b>	6-SMD
<b>Patohi dV / dt (Min)</b>	5V/µs	<b>Raupapa</b>	-
<b>Packaging</b>	Original-Reel®	<b>Paa / Case</b>	6-SMD, Gull Wing
<b>Momo putanga</b>	SCR	<b>Ētahi Ingoa</b>	TLP748JTP1FDKR
<b>Tae Mahi</b>	-40°C ~ 100°C	<b>Te maha o nga pouaka</b>	1
<b>Momo Tae</b>	Surface Mount	<b>Taumata Whakaaro Moe (MSL)</b>	1 (Unlimited)
<b>Whakahaere Toko Whakahaere / RoHS Tūnga</b>	Lead free / RoHS Compliant	<b>Whakaahuatanga Taipitopito</b>	Optoisolator SCR Output 4000Vrms 1 Channel 6-SMD
<b>I teie nei - I te Ture (RMS) (Max)</b>	150mA	<b>I teie nei - Whakaaho Iwi (Ift) (Max)</b>	10mA
<b>I teie nei - Whakaorangia (Ih)</b>	1mA	<b>I teie nei - DC Whakamua (Ki) (Max)</b>	50mA
<b>Whakaetanga</b>	BSI, SEMKO, UR		

### Hua e Hono ana

<p><b>TLP754(TP1,F)</b> Kaihanga: Toshiba Semiconductor and Storage Whakaahuatanga: HIGH SPEED LOGIC OUTPUT OPTOCOUP Tikiake:  TLP754(TP1,F).pdf</p> <p><b>RFQ</b></p>	<p><b>TLP748J(F)</b> Kaihanga: Toshiba Semiconductor and Storage Whakaahuatanga: OPTOISOLATOR 4KV SCR 6DIP Tikiake:  TLP748J(F).pdf</p> <p><b>RFQ</b></p>
<p><b>TLP74TG</b> Kaihanga: Tripp Lite Whakaahuatanga: SURGE SUPPRESSOR 7 OUT Tikiake:  TLP74TG.pdf</p> <p><b>RFQ</b></p>	<p><b>TLP725</b> Kaihanga: Tripp Lite Whakaahuatanga: SURGE SUPPRESSOR 7 OUT 25' Tikiake:  TLP725.pdf</p> <p><b>RFQ</b></p>
<p><b>TLP719(TP,F)</b> Kaihanga: Toshiba Semiconductor and Storage Whakaahuatanga: OPTOISOLATOR 5KV TRANS 6-SDIP GW Tikiake:  TLP719(TP,F).pdf</p> <p><b>RFQ</b></p>	<p><b>TLP754(F)</b> Kaihanga: Toshiba Semiconductor and Storage Whakaahuatanga: OPTOISO 5KV OPEN COLLECTOR 8DIP Tikiake:  TLP754(F).pdf</p> <p><b>RFQ</b></p>
<p><b>TLP731(D4-GR,F)</b> Kaihanga: Toshiba Semiconductor and Storage Whakaahuatanga: OPTOISO 4KV TRANS W/BASE 6DIP Tikiake:  TLP731(D4-GR,F).pdf</p> <p><b>RFQ</b></p>	<p><b>TLP74RB</b> Kaihanga: Tripp Lite Whakaahuatanga: SURGE SUPPRESSOR 7 OUT Tikiake:  TLP74RB.pdf</p> <p><b>RFQ</b></p>
<p><b>TLP74R</b> Kaihanga: Tripp Lite Whakaahuatanga: SURGE SUPPRESSOR 7 OUT 4' RA Tikiake:  TLP74R.pdf</p> <p><b>RFQ</b></p>	<p><b>TLP759(D4,J,F)</b> Kaihanga: Toshiba Semiconductor and Storage Whakaahuatanga: PHOTOCOUPLER LOGIC 8DIP T/H Tikiake:  TLP759(D4,J,F).pdf</p> <p><b>RFQ</b></p>
<p><b>TLP748J(D4,F)</b> Kaihanga: Toshiba Semiconductor and Storage Whakaahuatanga: OPTOISOLATOR 4KV SCR 6DIP Tikiake:  TLP748J(D4,F).pdf</p> <p><b>RFQ</b></p>	<p><b>TLP732(D4-GR-LF2,F)</b> Kaihanga: Toshiba Semiconductor and Storage Whakaahuatanga: OPTOISOLATR 4KV TRANSISTOR 6DIP Tikiake:  TLP732(D4-GR-LF2,F).pdf</p> <p><b>RFQ</b></p>

### Nga tohu e pa ana

Toshiba Semiconductor and Storage TLP748J(TP1,F)	TLP748J(TP1,F) Kaitoha	TLP748J(TP1,F) Kaiwhakarato
TLP748J(TP1,F) Utu	TLP748J(TP1,F) Nga Whakaahua	TLP748J(TP1,F) Whakaahua
Pukaiti PDF TLP748J(TP1,F) PDF	TLP748J(TP1,F) Tangohia te Pukaiti	Pukaiti TLP748J(TP1,F)
TLP748J(TP1,F) Stock	Hokona TLP748J(TP1,F)	Hokona Toshiba Semiconductor and Storage TLP748J(TP1,F)
Toshiba Semiconductor and Storage TLP748J(TP1,F)	Toshiba Semiconductor and Storage Kaiwhakarato	Kaitoha Toshiba Semiconductor and Storage
Toshiba Semiconductor and Storage TLP748J(TP1,F)	Toshiba TLP748J(TP1,F)	