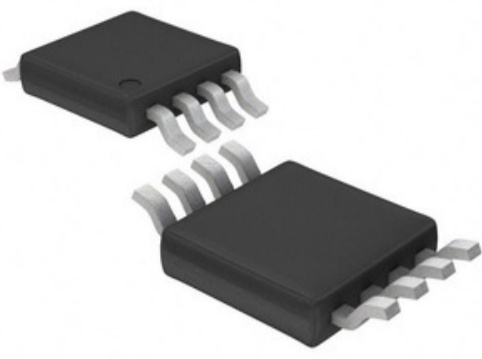




AHEAD OF WHAT'S POSSIBLE™



Ko te ahua he whakaahua.
Tirohia nga whakaritenga mo nga taipitopito hua.

LTC6652AHMS8-3.3#PBF

Tau Wae: **LTC6652AHMS8-3.3#PBF**
 Whakaahuatanga Hua: IC VREF SERIES 3.3V 8MSOP
 RoHs Tūnga: Whakahaerehia te kore utu / RoHS
 Ngā Rauemi: [LTC6652AHMS8-3.3#PBF.pdf](#)

Kaihanga / Waitohu: ADI (Analog Devices, Inc.)
 Tuhinga mai i: Hong Kong
 Te Ara Tuhi: DHL/Fedex/TNT/UPS/EMS

[TUKUNA HE UIUI](#)

Taipitopito hua

Tau Wae	LTC6652AHMS8-3.3#PBF	Kaihanga	ADI (Analog Devices, Inc.)
Whakaahuatanga	IC VREF SERIES 3.3V 8MSOP	Whakahaere Toko Whakahaere / RoHS Tūnga	Whakahaerehia te kore utu / RoHS
Pepa Raraunga	LTC6652AHMS8-3.3#PBF.pdf		
Putanga - Whakaputa (Min / Whakatika)	3.3V	Momotuhi - Whakauru	3.6 V ~ 13.2 V
Te manawanui	±0.05%	Te Tae Tema	5ppm/°C
Pūrere Pūrere Whakarato	8-MSOP	Raupapa	-
Momo Pukapuka	Series	Packaging	Tube
Paa / Case	8-TSSOP, 8-MSOP (0.118", 3.00mm Width)	Momo putanga	Fixed
Ētahi Ingoa	LTC6652AHMS833PBF	Tae Mahi	-40°C ~ 125°C (TA)
Noise - 10Hz ki te 10kHz	-	Noise - 0.1Hz ki te 10Hz	2.2ppmp-p
Momo Tae	Surface Mount	Taumata Whakaaro Moe (MSL)	1 (Unlimited)
Te Tae Kaituku Taeke	12 Weeks	Whakahaere Toko Whakahaere / RoHS Tūnga	Lead free / RoHS Compliant
Whakaahuatanga Taipitopito	Series Voltage Reference IC ±0.05% 5mA 8-MSOP	I teie nei - Te tuku	560µA
Nama - Whakaputa	5mA	Tau Wae Tuakiri	LTC6652

Hua e Hono ana

<p>LTC6652AHMS8-5#TRPBF Kaihanga: ADI (Analog Devices, Inc.) Whakaahuatanga: IC VREF SERIES 5V 8MSOP Tikiake: LTC6652AHMS8-5#TRPBF.pdf</p> <p>RFQ</p>	<p>LTC6652AHMS8-5#PBF Kaihanga: ADI (Analog Devices, Inc.) Whakaahuatanga: IC VREF SERIES 5V 8MSOP Tikiake: LTC6652AHMS8-5#PBF.pdf</p> <p>RFQ</p>
<p>LTC6652AHMS8-2.048#TRPBF Kaihanga: ADI (Analog Devices, Inc.) Whakaahuatanga: IC VREF SERIES 2.048V 8MSOP Tikiake: LTC6652AHMS8-2.048#TRPBF.pdf</p> <p>RFQ</p>	<p>LTC6652AHMS8-3#PBF Kaihanga: ADI (Analog Devices, Inc.) Whakaahuatanga: IC VREF SERIES 3.3V 8MSOP Tikiake: LTC6652AHMS8-3#PBF.pdf</p> <p>RFQ</p>
<p>LTC6652AHMS8-4.096#PBF Kaihanga: ADI (Analog Devices, Inc.) Whakaahuatanga: IC VREF SERIES 4.096V 8MSOP Tikiake: LTC6652AHMS8-4.096#PBF.pdf</p> <p>RFQ</p>	<p>LTC6652AHMS8-3.3#TRPBF Kaihanga: ADI (Analog Devices, Inc.) Whakaahuatanga: IC VREF SERIES 3.3V 8MSOP Tikiake: LTC6652AHMS8-3.3#TRPBF.pdf</p> <p>RFQ</p>
<p>LTC6652BHLS8-2.5 Kaihanga: ADI (Analog Devices, Inc.) Whakaahuatanga: IC POWER MANAGEMENT Tikiake: LTC6652BHLS8-2.5.pdf</p> <p>RFQ</p>	<p>LTC6652AHMS8-2.048#PBF Kaihanga: ADI (Analog Devices, Inc.) Whakaahuatanga: IC VREF SERIES 2.048V 8MSOP Tikiake: LTC6652AHMS8-2.048#PBF.pdf</p> <p>RFQ</p>
<p>LTC6652AHMS8-4.096#TRPBF Kaihanga: ADI (Analog Devices, Inc.) Whakaahuatanga: IC VREF SERIES 4.096V 8MSOP Tikiake: LTC6652AHMS8-4.096#TRPBF.pdf</p> <p>RFQ</p>	<p>LTC6652AHMS8-2.5#PBF Kaihanga: ADI (Analog Devices, Inc.) Whakaahuatanga: IC VREF SERIES 2.5V 8MSOP Tikiake: LTC6652AHMS8-2.5#PBF.pdf</p> <p>RFQ</p>
<p>LTC6652AHMS8-2.5#TRPBF Kaihanga: ADI (Analog Devices, Inc.) Whakaahuatanga: IC VREF SERIES 2.5V 8MSOP Tikiake: LTC6652AHMS8-2.5#TRPBF.pdf</p> <p>RFQ</p>	<p>LTC6652AHMS8-3#TRPBF Kaihanga: ADI (Analog Devices, Inc.) Whakaahuatanga: IC VREF SERIES 3V 8MSOP Tikiake: LTC6652AHMS8-3#TRPBF.pdf</p> <p>RFQ</p>

Nga tohu e pa ana

ADI (Analog Devices, Inc.) LTC6652AHMS8-3.3#PBF	LTC6652AHMS8-3.3#PBF Kaitoha	LTC6652AHMS8-3.3#PBF Kaiwhakarato
LTC6652AHMS8-3.3#PBF Utu	LTC6652AHMS8-3.3#PBF Nga Whakaahua	LTC6652AHMS8-3.3#PBF Whakaahua
Pukaiti PDF LTC6652AHMS8-3.3#PBF PDF	LTC6652AHMS8-3.3#PBF Tangohia te Pukaiti	Pukaiti LTC6652AHMS8-3.3#PBF
LTC6652AHMS8-3.3#PBF Stock	Hokona LTC6652AHMS8-3.3#PBF	Hokona ADI (Analog Devices, Inc.) LTC6652AHMS8-3.3#PBF
ADI (Analog Devices, Inc.) LTC6652AHMS8-3.3#PBF	ADI (Analog Devices, Inc.) Kaiwhakarato	Kaitoha ADI (Analog Devices, Inc.)
ADI (Analog Devices, Inc.) LTC6652AHMS8-3.3#PBF	AD LTC6652AHMS8-3.3#PBF	ADI (Analog Devices, Inc.) LTC6652AHMS8-3.3#PBF
Analog Devices Inc. LTC6652AHMS8-3.3#PBF	Analog Devices, Inc. LTC6652AHMS8-3.3#PBF	