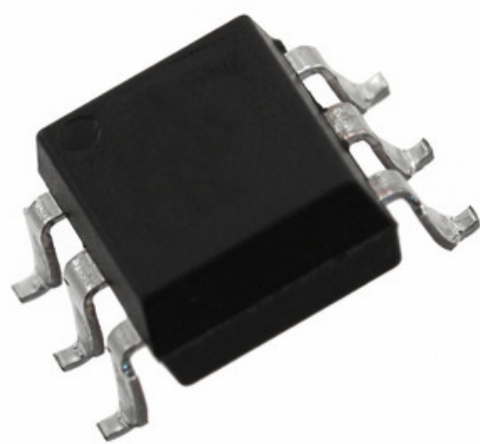


EVERLIGHT



Ko te ahua he whakaahua.
Tirohia nga whakaritenga mo nga taipitopito hua.

H11B3S(TB)

Tau Wae: **H11B3S(TB)**

Whakaahuatanga Hua: OPTOISO 5KV DARL W/BASE 6SMD

RoHs Tūnga: Whakahaerehia te kore utu / RoHS

Ngā Rauemi: [H11B3S\(TB\).pdf](#)

Kaihanga / Waitohu: Everlight Electronics

Tuhinga mai i: Hong Kong

Te Ara Tuhi: DHL/Fedex/TNT/UPS/EMS

TUKUNA HE UIUI >

Taipitopito hua

Tau Wae	H11B3S(TB)	Kaihanga	Everlight Electronics
Whakaahuatanga	OPTOISO 5KV DARL W/BASE 6SMD	Whakahaere Toko Whakahaere / RoHS Tūnga	Whakahaerehia te kore utu / RoHS
Pepa Raraunga	H11B3S(TB).pdf		
Putanga - Whakaputa (Max)	55V	Putanga - Whakamotu	5000Vrms
Puku - Whakamua (Vf) (Typ)	1.2V	Te Utu Utu (Max)	1V
Tahuri / Hurihia te Wa (Toa)	25µs, 18µs	Pūrere Pūrere Whakarato	6-SMD
Raupapa	-	Te Whakatika / Hinga Te Wā (Tatau)	-
Packaging	Tape & Reel (TR)	Paa / Case	6-SMD, Gull Wing
Momo putanga	Darlington with Base	Tae Mahi	-55°C ~ 100°C
Te maha o nga pouaka	1	Momo Tae	Surface Mount
Taumata Whakaaro Moe (MSL)	1 (Unlimited)	Te Tae Kaituku Taeke	20 Weeks
Whakahaere Toko Whakahaere / RoHS Tūnga	Lead free / RoHS Compliant	Momo Input	DC
Whakaahuatanga Taipitopito	Optoisolator Darlington with Base Output 5000Vrms 1 Channel 6-SMD	Whakawhiti Whakawhiti o Naianei (Min)	100% @ 1mA
Whakawhiti Whakawhiti o Naianei (Max)	-	I teie nei - Whakaatu / Channel	-
I teie nei - DC Whakamua (Ki) (Max)	60mA		

Hua e Hono ana

<p>H11B3S(TB)-V Kaihanga: Everlight Electronics Whakaahuatanga: OPTOISO 5KV DARL W/BASE 6SMD Tikiake: H11B3S(TB)-V.pdf</p> <p><input type="button" value="RFQ"/></p>	<p>H11B3S1(TB) Kaihanga: Everlight Electronics Whakaahuatanga: OPTOISO 5KV DARL W/BASE 6SMD Tikiake: H11B3S1(TB).pdf</p> <p><input type="button" value="RFQ"/></p>
<p>H11B3S1(TA) Kaihanga: Everlight Electronics Whakaahuatanga: OPTOISO 5KV DARL W/BASE 6SMD Tikiake: H11B3S1(TA).pdf</p> <p><input type="button" value="RFQ"/></p>	<p>H11B3S Kaihanga: AMI Semiconductor / ON Semiconductor Whakaahuatanga: OPTOISO 5.3KV DARL W/BASE 6SMD Tikiake: H11B3S.pdf</p> <p><input type="button" value="RFQ"/></p>
<p>H11B3S1(TA)-V Kaihanga: Everlight Electronics Whakaahuatanga: OPTOISO 5KV DARL W/BASE 6SMD Tikiake: H11B3S1(TA)-V.pdf</p> <p><input type="button" value="RFQ"/></p>	<p>H11B33SD Kaihanga: AMI Semiconductor / ON Semiconductor Whakaahuatanga: OPTOISO 5.3KV DARL W/BASE 6SMD Tikiake: H11B33SD.pdf</p> <p><input type="button" value="RFQ"/></p>
<p>H11B3M-V Kaihanga: Everlight Electronics Whakaahuatanga: OPTOISO 5KV DARL W/BASE 6DIP Tikiake: H11B3M-V.pdf</p> <p><input type="button" value="RFQ"/></p>	<p>H11B3SD Kaihanga: AMI Semiconductor / ON Semiconductor Whakaahuatanga: OPTOISO 5.3KV DARL W/BASE 6SMD Tikiake: H11B3SD.pdf</p> <p><input type="button" value="RFQ"/></p>
<p>H11B3S(TA) Kaihanga: Everlight Electronics Whakaahuatanga: OPTOISO 5KV DARL W/BASE 6SMD Tikiake: H11B3S(TA).pdf</p> <p><input type="button" value="RFQ"/></p>	<p>H11B3S(TA)-V Kaihanga: Everlight Electronics Whakaahuatanga: OPTOISO 5KV DARL W/BASE 6SMD Tikiake: H11B3S(TA)-V.pdf</p> <p><input type="button" value="RFQ"/></p>
<p>H11B3S1(TB)-V Kaihanga: Everlight Electronics Whakaahuatanga: OPTOISO 5KV DARL W/BASE 6SMD Tikiake: H11B3S1(TB)-V.pdf</p> <p><input type="button" value="RFQ"/></p>	<p>H11B3M Kaihanga: Everlight Electronics Whakaahuatanga: OPTOISO 5KV DARL W/BASE 6DIP Tikiake: H11B3M.pdf</p> <p><input type="button" value="RFQ"/></p>

Nga tohu e pa ana

Everlight Electronics H11B3S(TB)
H11B3S(TB) Utu
Pukaiti PDF H11B3S(TB) PDF
H11B3S(TB) Stock
Everlight Electronics H11B3S(TB)
Everlight Electronics H11B3S(TB)

H11B3S(TB) Kaitoha
H11B3S(TB) Nga Whakaahua
H11B3S(TB) Tangohia te Pukaiti
Hokona H11B3S(TB)
Everlight Electronics Kaiwhakarato
Everlight Electronics Co Ltd H11B3S(TB)

H11B3S(TB) Kaiwhakarato
H11B3S(TB) Whakaahua
Pukaiti H11B3S(TB)
Hokona Everlight Electronics H11B3S(TB)
Kaitoha Everlight Electronics