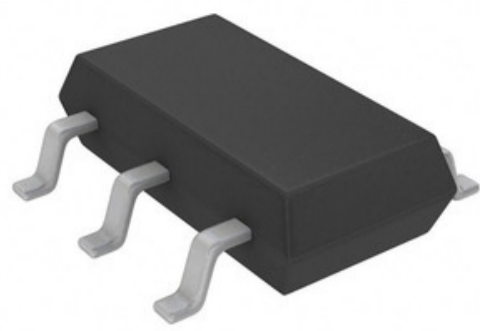




AHEAD OF WHAT'S POSSIBLE™



Ko te ahua he whakaahua.
Tirohia nga whakaritenga mo nga taipitopito hua.

LT3462ES6#TRPBF

Tau Wae: **LT3462ES6#TRPBF**
 Whakaahuatanga Hua: IC REG CUK INV ADJ 0.25A TSOT23
 RoHS Tūnga: Whakahaerehia te kore utu / RoHS
 Ngā Rauemi: [LT3462ES6#TRPBF.pdf](#)

Kaihanga / Waitohu: ADI (Analog Devices, Inc.)
 Tuhinga mai i: Hong Kong
 Te Ara Tuhi: DHL/Fedex/TNT/UPS/EMS

[TUKUNA HE UIUI](#)

Taipitopito hua

Tau Wae	LT3462ES6#TRPBF	Kaihanga	ADI (Analog Devices, Inc.)
Whakaahuatanga	IC REG CUK INV ADJ 0.25A TSOT23	Whakahaere Toko Whakahaere / RoHS Tūnga	Whakahaerehia te kore utu / RoHS
Pepa Raraunga	LT3462ES6#TRPBF.pdf		
Putanga - Whakaputa (Min / Whakatika)	-1.265V	Putanga - Whakaputa (Max)	-38V
Momotuhi - Input (Min)	2.5V	Ngaohihi - Whakauru (Max)	16V
Topology	Cuk	Kaiwhakahaere Tukutahi	No
Pūre Pūre Whakarato	TSOT-23-6	Raupapa	-
Packaging	Tape & Reel (TR)	Paa / Case	SOT-23-6 Thin, TSOT-23-6
Momo putanga	Adjustable	Whirihoranga Whakaputa	Negative
Tae Mahi	0°C ~ 70°C (TA)	Tau o nga Hua	1
Momo Tae	Surface Mount	Taumata Whakaaro Moe (MSL)	1 (Unlimited)
Te Tae Kaituku Taeke	8 Weeks	Whakahaere Toko Whakahaere / RoHS Tūnga	Lead free / RoHS Compliant
Mahinga	Step-Up/Step-Down	Rautanga - Whakawhiti	1.2MHz
Whakaahuatanga Taipitopito	Cuk Switching Regulator IC Negative Adjustable -1.265V 1 Output 250mA SOT-23-6 Thin, TSOT-23-6	Nama - Whakaputa	250mA
Tau Wae Tuakiri	LT3462		

Hua e Hono ana

<p>LT3463AEDD#PBF Kaihanga: ADI (Analog Devices, Inc.) Whakaahuatanga: IC REG BST SWITCHD CAP INV 10DFN Tikiake: LT3463AEDD#PBF.pdf</p> <p>RFQ</p>	<p>LT3462AEDC#TRMPBF Kaihanga: ADI (Analog Devices, Inc.) Whakaahuatanga: 300MA, INVERTING 2.7MHZ DC/DC CO Tikiake: LT3462AEDC#TRMPBF.pdf</p> <p>RFQ</p>
<p>LT3463EDD#PBF Kaihanga: ADI (Analog Devices, Inc.) Whakaahuatanga: IC REG BST SWITCHD CAP INV 10DFN Tikiake: LT3463EDD#PBF.pdf</p> <p>RFQ</p>	<p>LT3462AES6#TRPBF Kaihanga: ADI (Analog Devices, Inc.) Whakaahuatanga: IC REG CUK INV ADJ 0.25A TSOT23 Tikiake: LT3462AES6#TRPBF.pdf</p> <p>RFQ</p>
<p>LT3463AEDD#TRPBF Kaihanga: ADI (Analog Devices, Inc.) Whakaahuatanga: IC REG BST SWITCHD CAP INV 10DFN Tikiake: LT3463AEDD#TRPBF.pdf</p> <p>RFQ</p>	<p>LT3464ETS8#TRMPBF Kaihanga: ADI (Analog Devices, Inc.) Whakaahuatanga: IC REG BOOST ADJ 85MA TSOT23-8 Tikiake: LT3464ETS8#TRMPBF.pdf</p> <p>RFQ</p>
<p>LT3461ES6#TRPBF Kaihanga: ADI (Analog Devices, Inc.) Whakaahuatanga: IC REG BOOST ADJ 0.3A TSOT23-6 Tikiake: LT3461ES6#TRPBF.pdf</p> <p>RFQ</p>	<p>LT3463EDD#TRPBF Kaihanga: ADI (Analog Devices, Inc.) Whakaahuatanga: IC REG BST SWITCHD CAP INV 10DFN Tikiake: LT3463EDD#TRPBF.pdf</p> <p>RFQ</p>
<p>LT3462AES6#TRMPBF Kaihanga: ADI (Analog Devices, Inc.) Whakaahuatanga: IC REG CUK INV ADJ 0.25A TSOT23 Tikiake: LT3462AES6#TRMPBF.pdf</p> <p>RFQ</p>	<p>LT3464ETS8#TRPBF Kaihanga: ADI (Analog Devices, Inc.) Whakaahuatanga: IC REG BOOST ADJ 85MA TSOT23-8 Tikiake: LT3464ETS8#TRPBF.pdf</p> <p>RFQ</p>
<p>LT3462ES6#TRMPBF Kaihanga: ADI (Analog Devices, Inc.) Whakaahuatanga: IC REG CUK INV ADJ 0.25A TSOT23 Tikiake: LT3462ES6#TRMPBF.pdf</p> <p>RFQ</p>	<p>LT3462AEDC#TRPBF Kaihanga: ADI (Analog Devices, Inc.) Whakaahuatanga: 300MA, INVERTING 2.7MHZ DC/DC CO Tikiake: LT3462AEDC#TRPBF.pdf</p> <p>RFQ</p>

Nga tohu e pa ana

ADI (Analog Devices, Inc.) LT3462ES6#TRPBF
 LT3462ES6#TRPBF Utu
 Pukaiti PDF LT3462ES6#TRPBF PDF
 LT3462ES6#TRPBF Stock
 ADI (Analog Devices, Inc.) LT3462ES6#TRPBF
 ADI (Analog Devices, Inc.) LT3462ES6#TRPBF
 Analog Devices Inc. LT3462ES6#TRPBF

LT3462ES6#TRPBF Kaitoha
 LT3462ES6#TRPBF Nga Whakaahua
 LT3462ES6#TRPBF Tangohia te Pukaiti
 Hokona LT3462ES6#TRPBF
 ADI (Analog Devices, Inc.) Kaiwhakarato
 AD LT3462ES6#TRPBF
 Analog Devices, Inc. LT3462ES6#TRPBF

LT3462ES6#TRPBF Kaiwhakarato
 LT3462ES6#TRPBF Whakaahua
 Pukaiti LT3462ES6#TRPBF
 Hokona ADI (Analog Devices, Inc.) LT3462ES6#TRPBF
 Kaitoha ADI (Analog Devices, Inc.)
 ADI (Analog Devices, Inc.) LT3462ES6#TRPBF