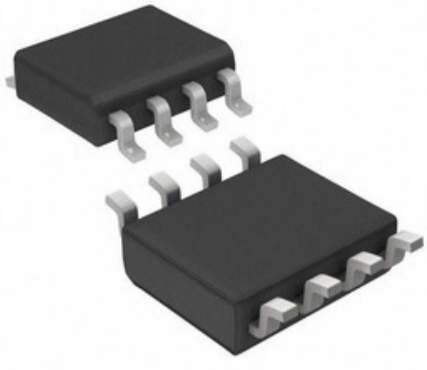




life.augmented



Ko te ahua he whakaahua.  
Tirohia nga whakaritenga mo nga taipitopito hua.

### L6615D013TR

Tau Wae: **L6615D013TR**  
 Whakaahuatanga Hua: IC CTRLR HIGH/LOW SIDE 8SOIC  
 RoHS Tūnga: Whakahaerehia te kore utu / RoHS  
 Ngā Rauemi: L6615D013TR.pdf

Kaihanga / Waitohu: STMicroelectronics  
 Tuhinga mai i: Hong Kong  
 Te Ara Tuhi: DHL/Fedex/TNT/UPS/EMS

TUKUNA HE UIUI >

#### Taipitopito hua

|                                   |   |  |   |
|-----------------------------------|---|--|---|
| <b>Tau Wae</b>                    | L6615D013TR                                       | <b>Kaihanga</b>                                | STMicroelectronics                      |
| <b>Whakaahuatanga</b>             | IC CTRLR HIGH/LOW SIDE 8SOIC                      | <b>Whakahaere Toko Whakahaere / RoHS Tūnga</b> | Whakahaerehia te kore utu / RoHS        |
| <b>Pepa Raraunga</b>              | L6615D013TR.pdf                                   |  |   |
| <b>Tuhinga o mua</b>              | 2.7 V ~ 22 V                                      | <b>Pūrere Pūrere Whakarato</b>                 | 8-SO                                    |
| <b>Raupapa</b>                    | -   | <b>Packaging</b>                               | Tape & Reel (TR)                        |
| <b>Paa / Case</b>                 | 8-SOIC (0.154", 3.90mm Width)                     | <b>Ētahi Ingoa</b>                             | 497-4023-2                              |
| <b>Tae Mahi</b>                   | -40°C ~ 85°C                                      | <b>Momo Tae</b>                                | Surface Mount                           |
| <b>Taumata Whakaaro Moe (MSL)</b> | 1 (Unlimited)                                     | <b>Whakahaere Toko Whakahaere / RoHS Tūnga</b> | Lead free / RoHS Compliant              |
| <b>Whakaahuatanga Taipitopito</b> | Power Supplies, Converters, Controllers PMIC 8-SO | <b>I teie nei - Te tuku</b>                    | 5mA                                     |
| <b>Tau Wae Tuakiri</b>            | L6615   | <b>Nga tono</b>                                | Power Supplies, Converters, Controllers |

#### Hua e Hono ana

|  |  |
|--|--|
| <p><b>L6611D</b><br/>                 Kaihanga: STMicroelectronics<br/>                 Whakaahuatanga: IC CTRLR HOUSEKEEPING BCD 20SOIC<br/>                 Tikiake:  L6611D.pdf</p> <p><input type="button" value="RFQ"/></p>     | <p><b>L6615D</b><br/>                 Kaihanga: STMicroelectronics<br/>                 Whakaahuatanga: IC CTRLR LOAD SHARE HI/LO 8-SOIC<br/>                 Tikiake:  L6615D.pdf</p> <p><input type="button" value="RFQ"/></p> |
| <p><b>L6611DTR</b><br/>                 Kaihanga: STMicroelectronics<br/>                 Whakaahuatanga: IC CTRLR HOUSEKEEPING 20SOIC<br/>                 Tikiake:  L6611DTR.pdf</p> <p><input type="button" value="RFQ"/></p>     | <p><b>L6610N</b><br/>                 Kaihanga: STMicroelectronics<br/>                 Whakaahuatanga: IC CTRLR HOUSEKEEPING BCD 24-DIP<br/>                 Tikiake:  L6610N.pdf</p> <p><input type="button" value="RFQ"/></p> |
| <p><b>L6699D</b><br/>                 Kaihanga: STMicroelectronics<br/>                 Whakaahuatanga: IC CTRLR OFFLINE PWR SUPP 16SOIC<br/>                 Tikiake:  L6699D.pdf</p> <p><input type="button" value="RFQ"/></p>     | <p><b>L6610DTR</b><br/>                 Kaihanga: STMicroelectronics<br/>                 Whakaahuatanga: IC CTRLR HOUSEKEEPING 24SOIC<br/>                 Tikiake:  L6610DTR.pdf</p> <p><input type="button" value="RFQ"/></p> |
| <p><b>L6668</b><br/>                 Kaihanga: STMicroelectronics<br/>                 Whakaahuatanga: IC CTRLR PWM PROG CM HV 16SOIC<br/>                 Tikiake:  L6668.pdf</p> <p><input type="button" value="RFQ"/></p>         | <p><b>L6615N</b><br/>                 Kaihanga: STMicroelectronics<br/>                 Whakaahuatanga: IC CTRLR LOAD SHARE HI/LO 8-DIP<br/>                 Tikiake:  L6615N.pdf</p> <p><input type="button" value="RFQ"/></p>  |
| <p><b>L6611N</b><br/>                 Kaihanga: STMicroelectronics<br/>                 Whakaahuatanga: IC CTRLR HOUSEKEEPING BCD 20-DIP<br/>                 Tikiake:  L6611N.pdf</p> <p><input type="button" value="RFQ"/></p>     | <p><b>L6668TR</b><br/>                 Kaihanga: STMicroelectronics<br/>                 Whakaahuatanga: IC CTRLR PWM PROG CM HV 16SOIC<br/>                 Tikiake:  L6668TR.pdf</p> <p><input type="button" value="RFQ"/></p> |
| <p><b>L6699DTR</b><br/>                 Kaihanga: STMicroelectronics<br/>                 Whakaahuatanga: IC CTRLR OFFLINE PWR SUPP 16SOIC<br/>                 Tikiake:  L6699DTR.pdf</p> <p><input type="button" value="RFQ"/></p> | <p><b>L6610D</b><br/>                 Kaihanga: STMicroelectronics<br/>                 Whakaahuatanga: IC CTRLR HOUSEKEEPING BCD 24SOIC<br/>                 Tikiake:  L6610D.pdf</p> <p><input type="button" value="RFQ"/></p> |

#### Nga tohu e pa ana

|                                |                                  |                                       |
|--------------------------------|----------------------------------|---------------------------------------|
| STMicroelectronics L6615D013TR | L6615D013TR Kaitoha              | L6615D013TR Kaiwhakarato              |
| L6615D013TR Utu                | L6615D013TR Nga Whakaahua        | L6615D013TR Whakaahua                 |
| Pukaiiti PDF L6615D013TR PDF   | L6615D013TR Tangohia te Pukaiiti | Pukaiiti L6615D013TR                  |
| L6615D013TR Stock              | Hokona L6615D013TR               | Hokona STMicroelectronics L6615D013TR |
| STMicroelectronics L6615D013TR | STMicroelectronics Kaiwhakarato  | Kaitoha STMicroelectronics            |
| STMicroelectronics L6615D013TR |                                  |                                       |