

# TLN SERIES TELCOM POWER FUSE

170 VDC • Current-Limiting • 1-600 A



## Description

The TLN Series fuses are specifically designed for the protection of telecommunications DC power distribution circuits.

## Features

- 170 VDC rating
- Fast-acting and current-limiting
- 1 to 600 amperes rating
- Dimensionally similar to 250 V Class R fuses

## Dimensions Inches (mm)

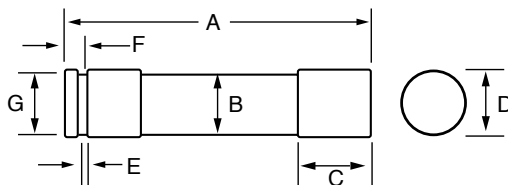


FIG. 1

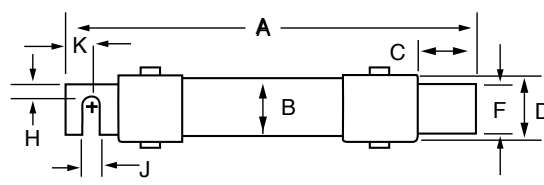


FIG. 2

Figure 1

AMPERE RATING	DIMENSIONS INCHES (mm)									
	A	B	C	D	E	F	G	H	J	K
1 – 30	2 (50.8)	½ (12.7)	½ (12.7)	⅜ (14.3)	⅝ (2.0)	⅝ (4.0)	⅜ (9.5)	—	—	—
35 – 60	3 (76.2)	¾ (19.1)	⅝ (15.9)	⅞ (20.6)	⅜ (2.4)	⅜ (4.8)	⅝ (15.9)	—	—	—

Figure 2

AMPERE RATING	DIMENSIONS INCHES (mm)									
	A	B	C	D	E	F	G	H	J	K
70 – 100	5⅞ (149.2)	1 (25.4)	1⅞ (27.0)	1⅞ (27.0)	⅞ (3.2)	¾ (19.1)	1¼ (31.6)	¼ (6.4)	⅝ (7.1)	½ (12.7)
110 – 200	7⅞ (181.0)	1½ (38.1)	1⅝ (37.3)	1⅞ (40.5)	⅞ (4.8)	1⅞ (28.6)	1⅞ (46.8)	⅞ (11.1)	⅝ (7.1)	1⅞ (17.5)
225 – 400	8⅞ (219.1)	2 (50.8)	1⅝ (49.2)	2⅞ (53.2)	¼ (6.4)	1⅝ (41.3)	2⅞ (59.5)	⅝ (15.9)	1⅞ (10.3)	1⅞ (23.8)
450 – 600	10⅞ (263.5)	2½ (63.5)	2⅞ (60.3)	2⅞ (65.9)	¼ (6.4)	2 (50.8)	2⅞ (72.2)	¾ (19.1)	1⅞ (13.5)	1⅞ (28.6)

## Specifications

<b>Voltage Rating</b>	170 VDC
<b>Interrupting Rating</b>	100 kA
<b>Ampere Range</b>	1 – 600 A
<b>Approvals</b>	UL Recognized (File: E71611)

## Ordering Information

AMPERE RATINGS						
1	15	40	80	150	300	600
3	20	45	90	175	350	—
5	25	50	100	200	400	—
6	30	60	110	225	450	—
10	35	70	125	250	500	—

SERIES	VOLTAGE	AMPERAGE	CATALOG NUMBER	ORDERING NUMBER
TLN	170VDC	6	TLN006	OTLN006.T

Replaces competitors' TPN and TGN Series.

## Web Resources

For additional information, visit:  
[Littelfuse.com/tln](http://Littelfuse.com/tln)

## Recommended Fuse Holders

LFR25 Series