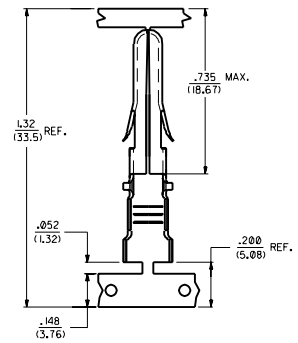
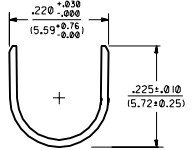
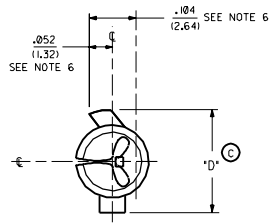
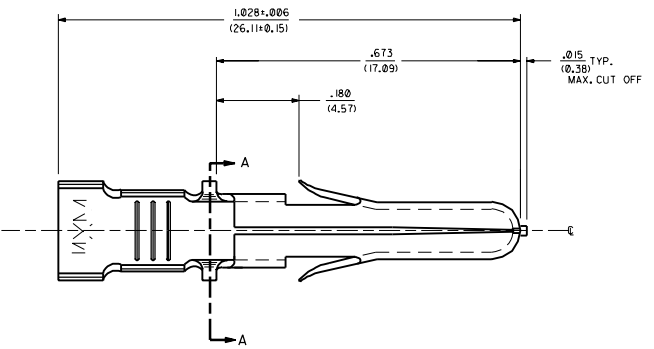


ITEM NO.	CRIMP SIZE	MATERIAL	PLATING	PACKAGING	'D'
42824-4001	18 AWG	.0160±.0005/(0.406/0.013) THICK BRASS ALLOY *C23000	PRE-TINNED .000202/ (0.00051) MIN. TIN	SUPPLIED ON REEL	.225 (5.72)
42824-4002	12 AWG			SUPPLIED LOOSE	
42824-4003	12 AWG			SUPPLIED ON REEL	.238 (6.05)
42824-4004	18 AWG			SUPPLIED LOOSE	
42824-4005	12 AWG				
42824-4006	12 AWG				

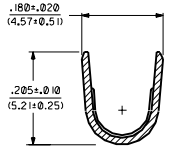


STRIP AND CARRIER LAYOUT  
SCALE 4:1

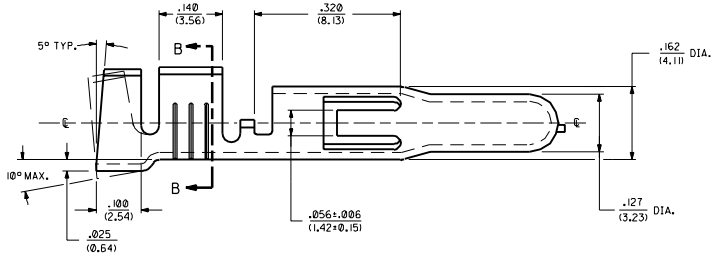
- NOTES:
1. THIS TERMINAL FOR USE IN HOUSING NO'S. 40585-1-5, 40585-3000, 43032-3300, 43032-3400, AND 43032-3500.
  2. TERMINALS FOR USE WITH SOLID OR STRANDED WIRE.
  3. TERMINALS TO BE SUPPLIED IN CHAIN FORM.
  4. PRODUCT CONFORMS TO PS-40585.
  5. REELS OF THESE TERMINALS CANNOT HAVE MECHANICAL SPLICES.
  6. USING SEAM LINE AS VERTICAL CENTERLINE INDICATOR- MAXIMUM EXCURSION FROM HORIZONTAL CENTERLINE IS INDICATED FOR BOTH LOCK AND STOP TABS.



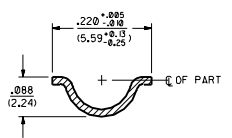
INSULATION CRIMP DETAIL



SECTION B-B



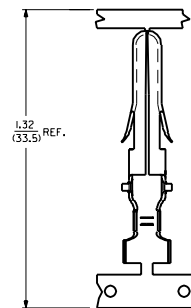
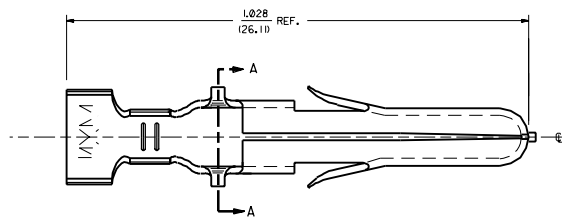
12 AWG TERMINAL SHOWN



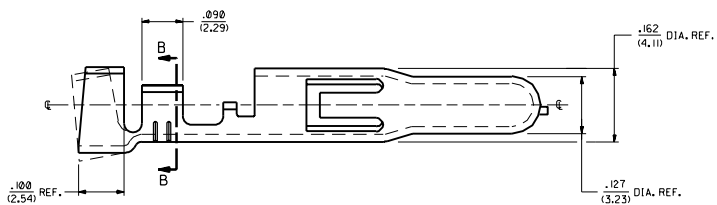
SECTION A-A

A1	UPDATE TO I.R. FOR 1008-G DMS	93/04/26	DMS
A2	UPDATE TO I.R. FOR 1008-G DMS	93/04/26	DMS
A3	ADD 249 DIM. FOR 1008-G DMS	93/04/26	DMS
A4	ADD 4003 FOR 99-95-0 C.I.S. 98-81-51		
B	UPDATE PICTORIALS FOR 99-95-0 C.I.S. 99-95-0		
B1	REV'D TAB & DIMS. ECH 86/14		
C	ADD P/MS - 04 TH - 06 ECH 92/08-0116 MINILETS 88-02-22		

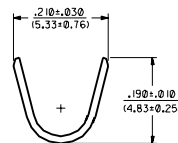
MOLEX INCORPORATED  
 PIN TERMINAL .125 (3,18) DIA.  
 SEE CHART SD-42824-40  
 SCALE 1:1  
 DATE 90/03/08  
 1 OF 2



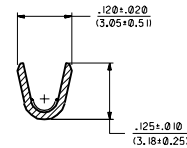
STRIP AND CARRIER LAYOUT  
SCALE 4:1



18 AWG TERMINAL SHOWN



INSULATION CRIMP DETAIL



SECTION B-B

B1	SEE SHEET 1
B	SEE SHEET 1
A4	SEE SHEET 1
A3	SEE SHEET 1
A2	SEE SHEET 1
A1	SEE SHEET 1
A	SEE SHEET 1

DRAWING SCALE: 1:1		REVISE ONLY ON CAD SYSTEM	
TITLE: PIN TERMINAL		DATE: 02/20/29	
MATERIAL: .125 (3.18) DIA.		DRAWN BY: SBB	
MATERIAL: .125 (3.18) DIA.		CHECKED BY: RWD	
MATERIAL: .125 (3.18) DIA.		SCALE: 8:1	
MATERIAL: .125 (3.18) DIA.		PART NO: SD-42824-40	
MATERIAL: .125 (3.18) DIA.		SEE CHART SD-42824-40	
MATERIAL: .125 (3.18) DIA.		MATERIAL: .125 (3.18) DIA.	